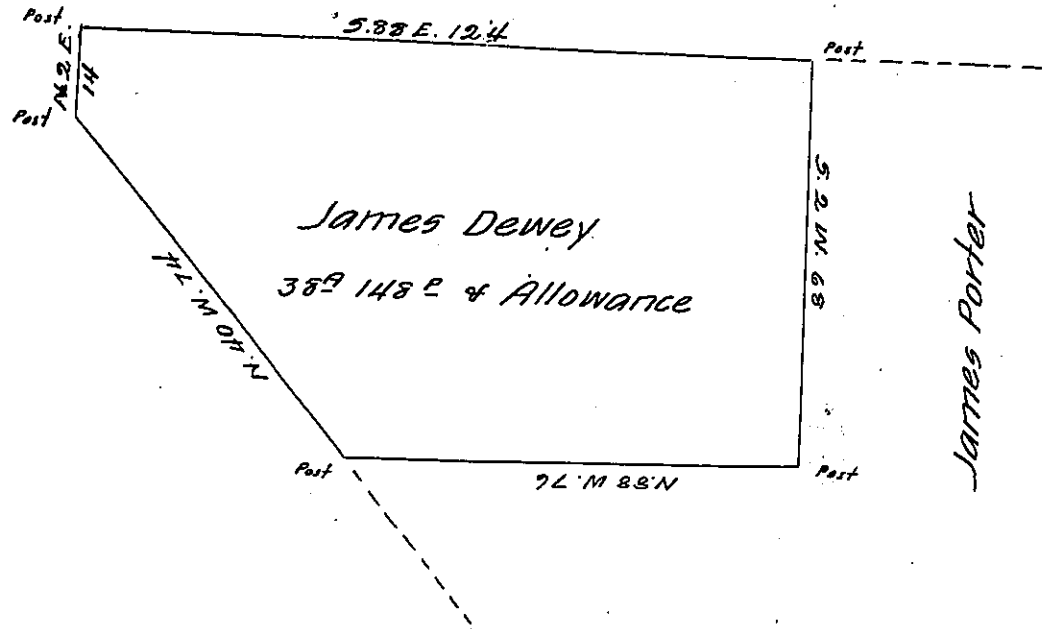


Eleal Stevens



*Draft of a Tract of land situate in the township of
 Ridgway in the County of Bradford, containing thirty
 eight acres and one hundred and forty eight perches
 and an Allowance of six per cent for Roads &c. Including
 an Improvement surveyed to James Dewey the 2nd day
 of June 1828. In pursuance of a Warrant dated April
 29th 1828*

Elip^t Major D.S.

Gabriel Hiester Esquire

Surveyor General

*IN TESTIMONY that the above is a copy of the original remaining on file in
 the Department of Internal Affairs of Pennsylvania, made
 conformably to an Act of Assembly approved the 16th day of
 February, 1833, I have hereunto set my Hand and caused
 the Seal of said Department to be affixed at Harrisburg,
 this eighth day of September 1904*

Isaac R. Brown
 Secretary of Internal Affairs.